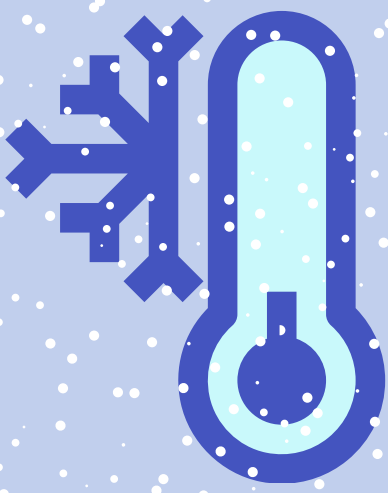


Winter Weather Preparedness

INFOGRAPHIC



90%

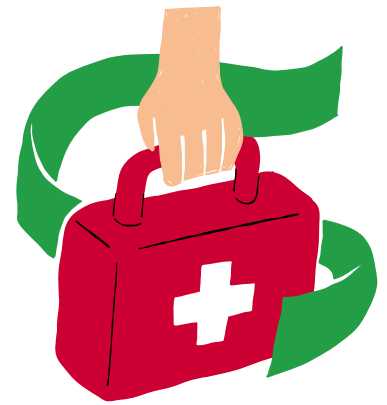
of households experience at least one weather-related disaster per year; being prepared with an emergency kit can reduce the severity of impact.

30%

of annual insurance claims for water damage are due to frozen or burst pipes, underscoring the significance of understanding how to prevent and address such issues during freezes.

90%

of damage can be mitigated through proper emergency kits



Keep Pipes Dripping

Keeping pipes dripping during a freeze helps prevent them from freezing and bursting by allowing water to continuously flow and relieving pressure that builds up due to ice formation.

Open Cabinets

Opening cabinets during a freeze can help prevent pipes located inside from freezing by allowing warm air to circulate around them.

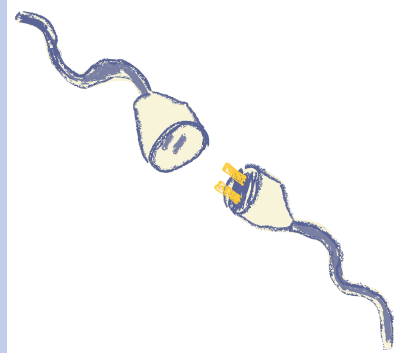
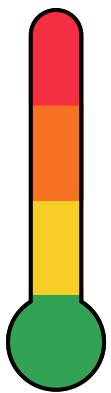
Have an emergency kit

In an emergency preparedness kit for a freeze, you should have blankets, non-perishable food, bottled water, flashlights, batteries, a battery-powered radio, extra clothing, and any necessary medications.



30%

of households experience frozen pipes during extreme cold spells, leading to costly damages.



Check Heating Systems

Check heating systems during a freeze by setting the thermostat above freezing, listening for unusual sounds or odors, and inspecting for leaks or malfunctions.

Insulate Exposed Pipes

Insulating pipes during a freeze helps prevent them from freezing and bursting, which can cause extensive damage; to insulate, wrap the pipes with foam pipe insulation or use heat tape.

Unplug Nonessentials

Unplug non-essentials during a freeze to conserve energy and prevent potential hazards such as electrical surges or fires; examples include electronic devices like TVs, gaming consoles, and chargers.

Additional Resources

- Heat Stress Webpage : <https://ehs.utexas.edu/working-safely/heat-stress>
- Basic Emergency Supply Kit Checklist: <https://emergencymanagement.utexas.edu/sites/default/files/2024-02/basic-emergency-supply-kit.png>
- Campus Closures Guidelines: <https://emergencymanagement.utexas.edu/safety/campus-closures>
- 4 P's of Winter Preparedness: <https://emergencymanagement.utexas.edu/sites/default/files/2023-11/4-ps-of-winter-preparedness.png>
- Emergency Preparedness Pocket Guide: https://emergencymanagement.utexas.edu/sites/default/files/Emergency%20Preparedness%20Pocket%20Guide%20PRINT%203_Updated%206-28-22.pdf